

**Custom Made to Order UPVC Channel
316 Grade Stainless Steel Grates**





Simply complete the order form and return to your Grates 2 Go supplier.

DATE: _____ PURCHASE ORDER #: _____

COMPANY: _____

CONTACT NAME: _____

PRODUCT: BLACK BASE CHANNEL

- TILE INSERT - BLACK 
- BRICK PATTERN - BLACK 
- FLOW PATTERN - BLACK 
- WEDGE WIRE - BLACK 
- SQUARE BAR - BLACK 

GREY BASE CHANNEL

- TILE INSERT - GREY 
- BRICK PATTERN - GREY 
- FLOW PATTERN - GREY 
- WEDGE WIRE - GREY 
- SQUARE BAR - GREY 

MATCHING POINT DRAIN - 100mm x 100mm x 25mm deep

- | | | |
|---|---|---|
| <input type="radio"/> TILE INSERT - BLACK  | <input type="radio"/> TILE INSERT - GREY  | <input type="radio"/> TILE INSERT - WHITE  |
| <input type="radio"/> BRICK PATTERN - BLACK  | <input type="radio"/> SQUARE BAR - BLACK  | <input type="radio"/> WEDGE WIRE - GREY  |
| <input type="radio"/> FLOW PATTERN - BLACK  | <input type="radio"/> BRICK PATTERN - GREY  | <input type="radio"/> SQUARE BAR - GREY  |
| <input type="radio"/> WEDGE WIRE - BLACK  | <input type="radio"/> FLOW PATTERN - GREY  | |

QUANTITY: _____

DIMENSIONS (in millimetres)

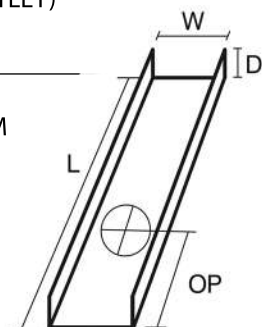
LENGTH (L): _____

OUTLET POSITION (OP): _____
(TO CENTRE OF OUTLET)

QUANTITY: _____

WIDTH (W): 100MM

DEPTH (D): 25MM



CHANNEL OUTLET SIZE:

- 43MM
- 70MM
- 83MM

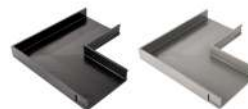
POINT DRAIN OUTLET SIZE:

- 43MM
- 70MM
- 83MM

JOINERS

- CORNER JOINER - BLACK
- CORNER JOINER - GREY

QUANTITY: _____



- STRAIGHT JOINER - BLACK
- STRAIGHT JOINER - GREY

QUANTITY: _____